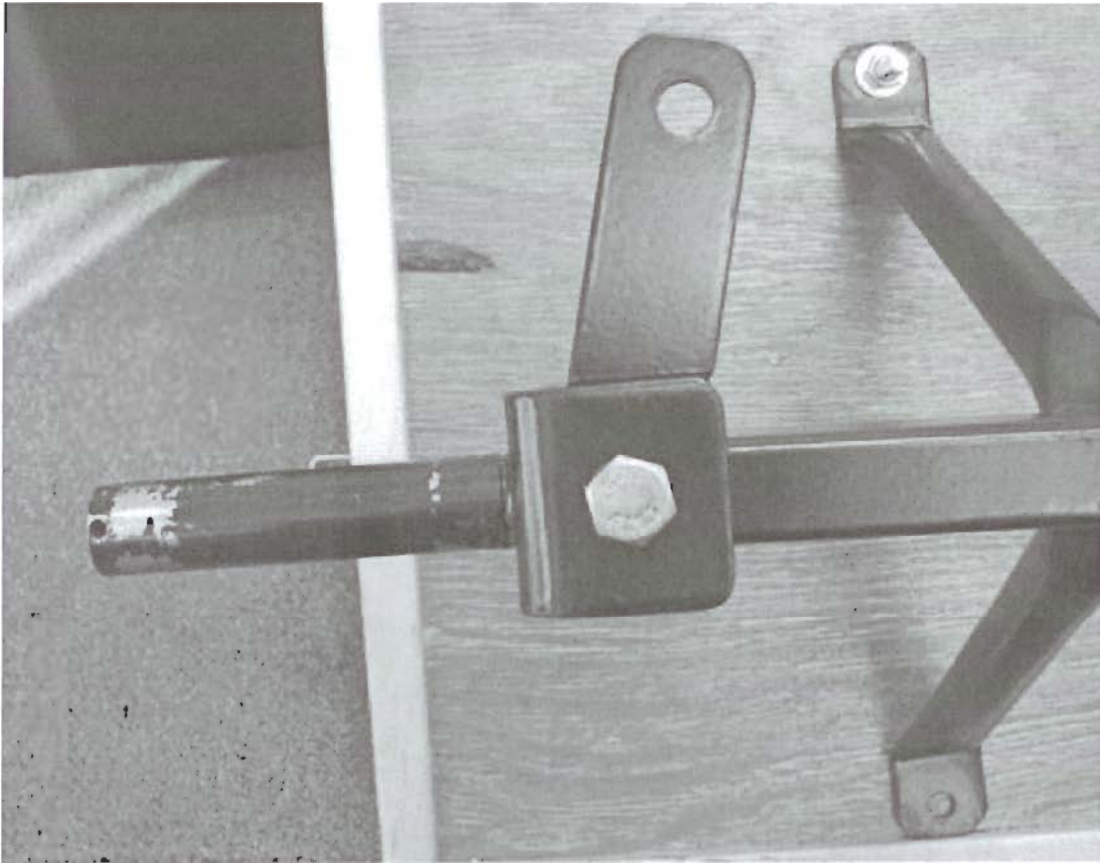


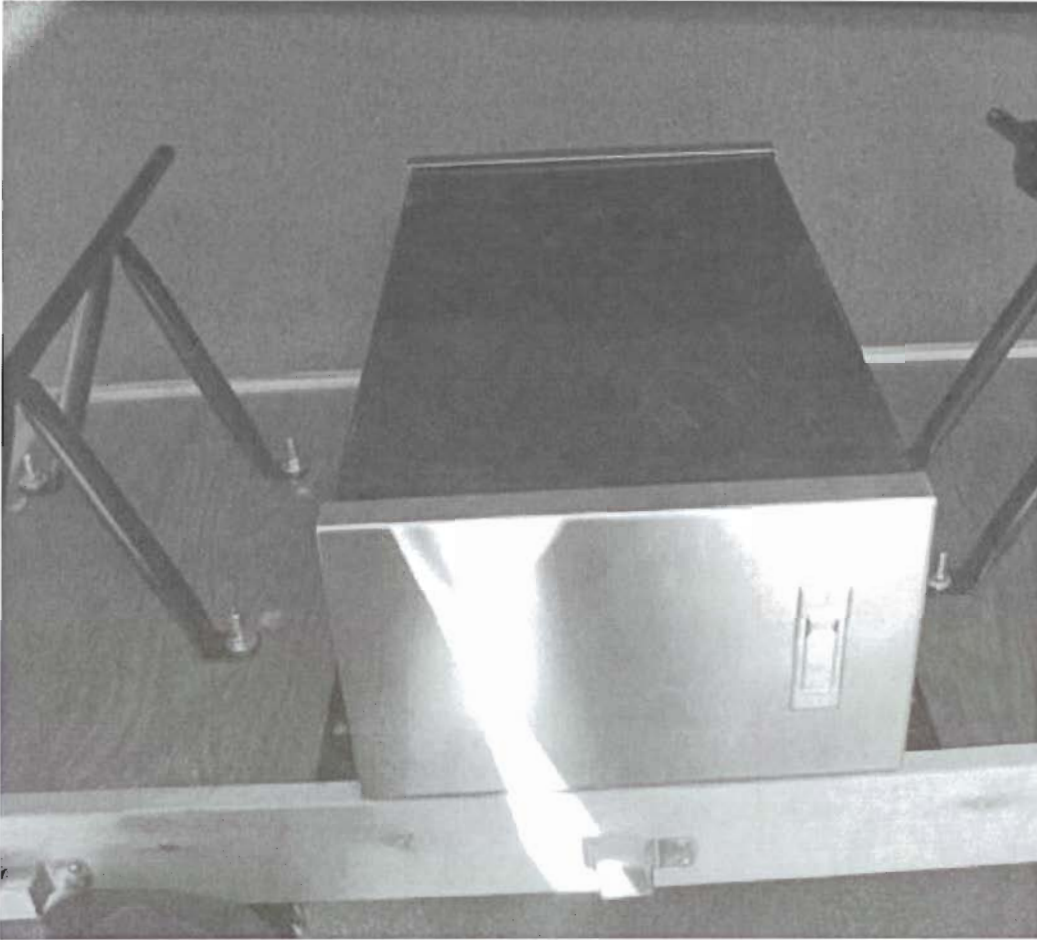
2. Use nuts and bolts to connect swing arms to front axle. The wings of the swing arms need to swing towards the back of the wagon and not the front. Once swing arms are connected, use nuts and bolts to attach front axle to the wagon



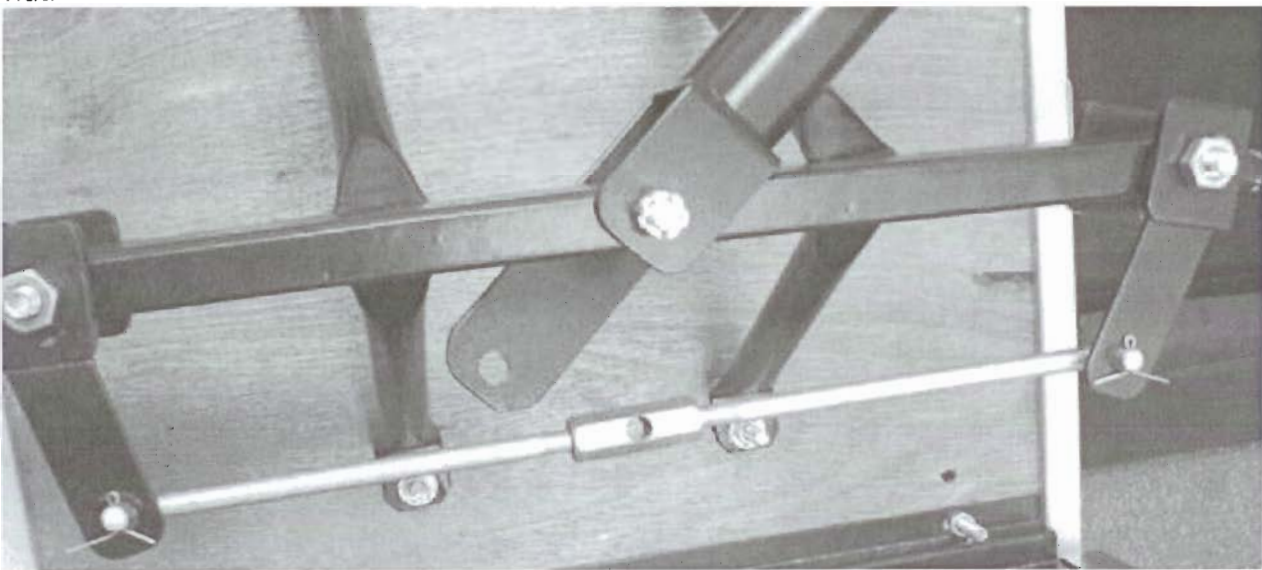
3. Place the ends of the rods that are connected to the turnbuckle into the "wings" on the front axle. Adjust the length of the rods by turning them in the turnbuckle so that the axles are as straight as possible.

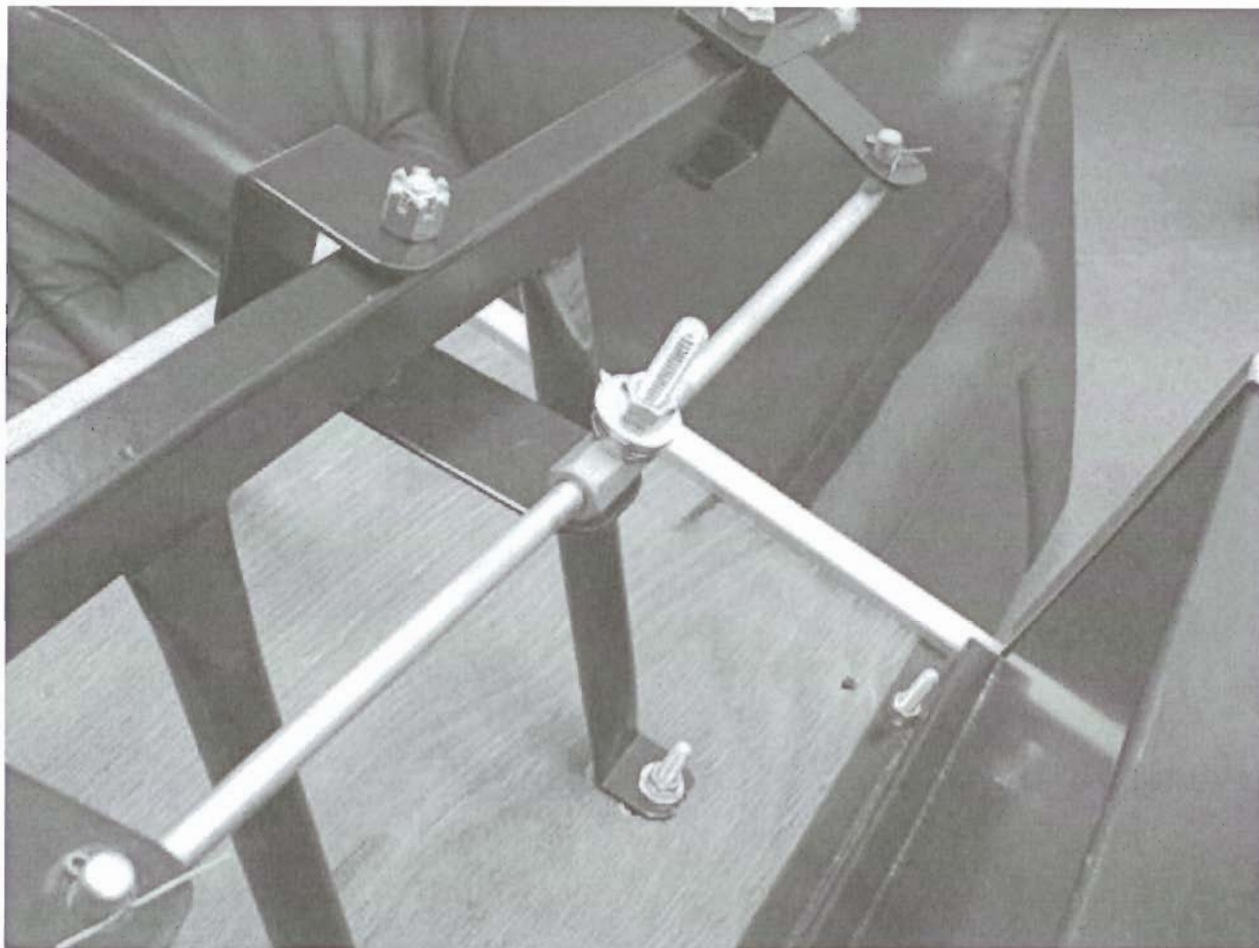


4. Use nuts and bolts to attach the tool box to the underside of the wagon.

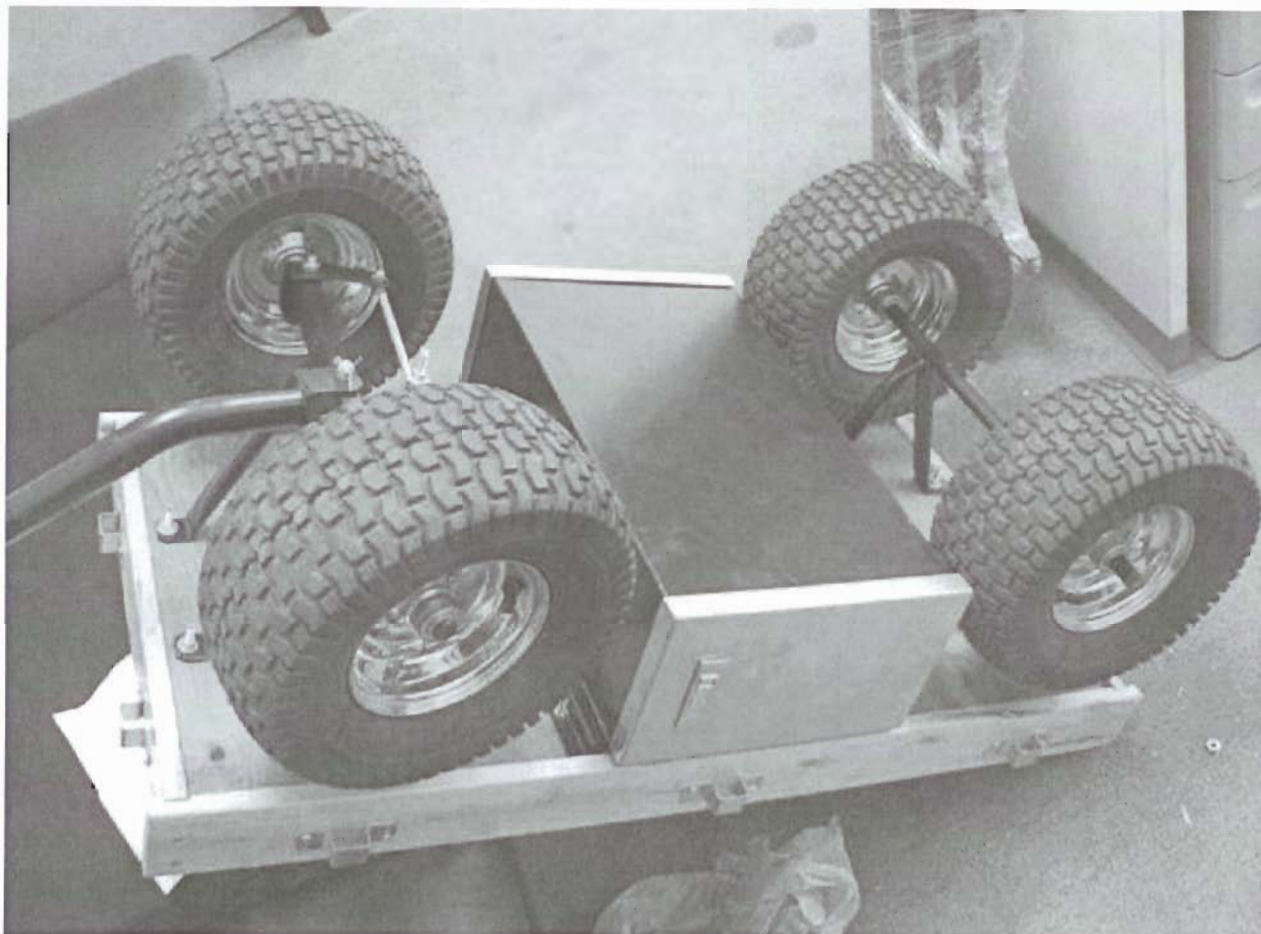


5. Attach the curved **bottom** portion of the **pull arm** to the front axle. Place the bolt through the front axle and the pull arm. Screw on the nut and put a cotter pin through the hole of the bolt. Spread the arms of the cotter pin. Align the other hole with the hole on the turnbuckle and place another bolt through these two holes and attach the nut.





6. Slide wheels onto axles and insert cotter pin into holes. Spread ends of cotter pins.



7. Attach the **long portion of the pull handle** to the short portion and connect with nut and bolt.





8. Use nut and bolt to connect short arm to cooler rack. Once connected, hook short rod over back axle and other two brackets to back of wagon.





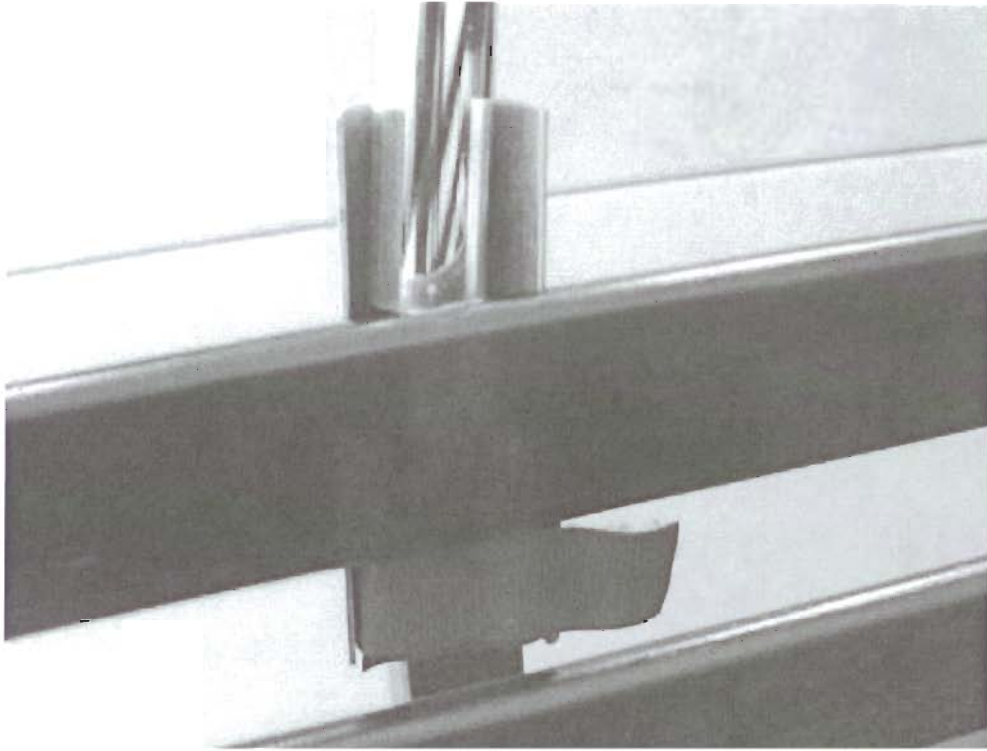


9. Insert **side rails** into holder with vertical rails **facing** out.



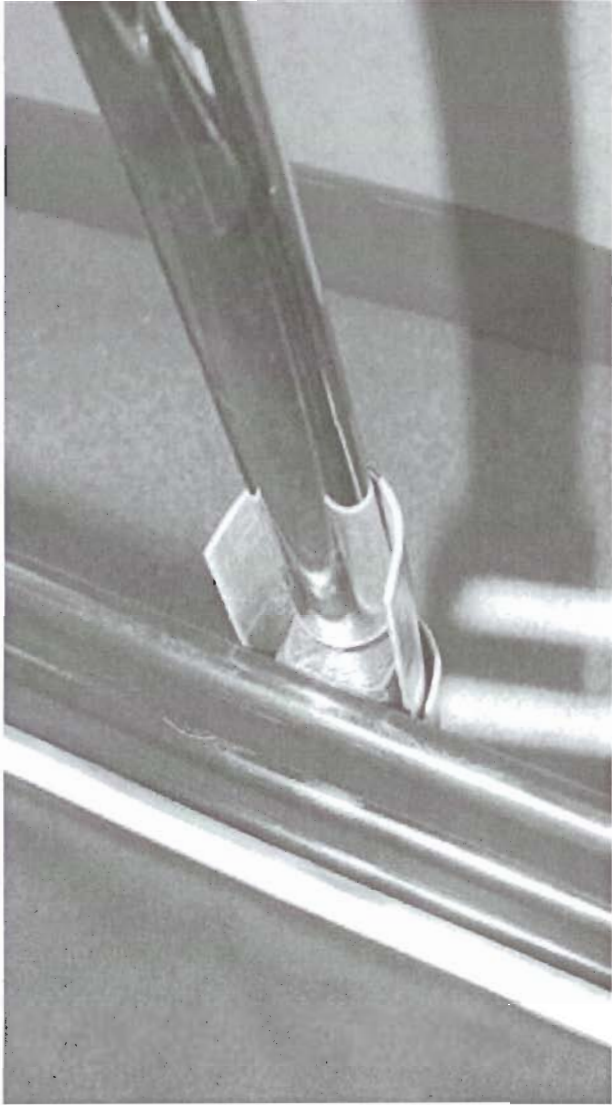
10. Place frame on the center vertical rail. Attach with Velcro strip.

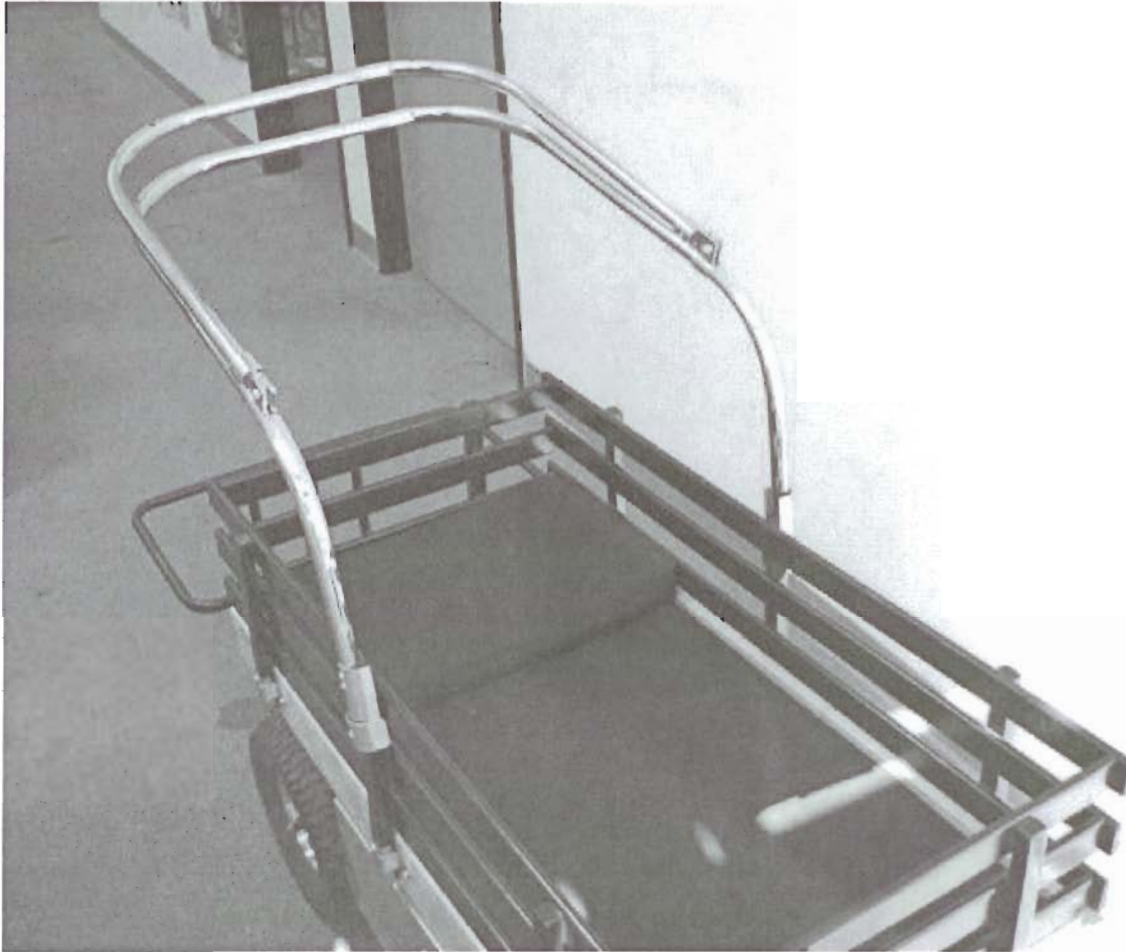






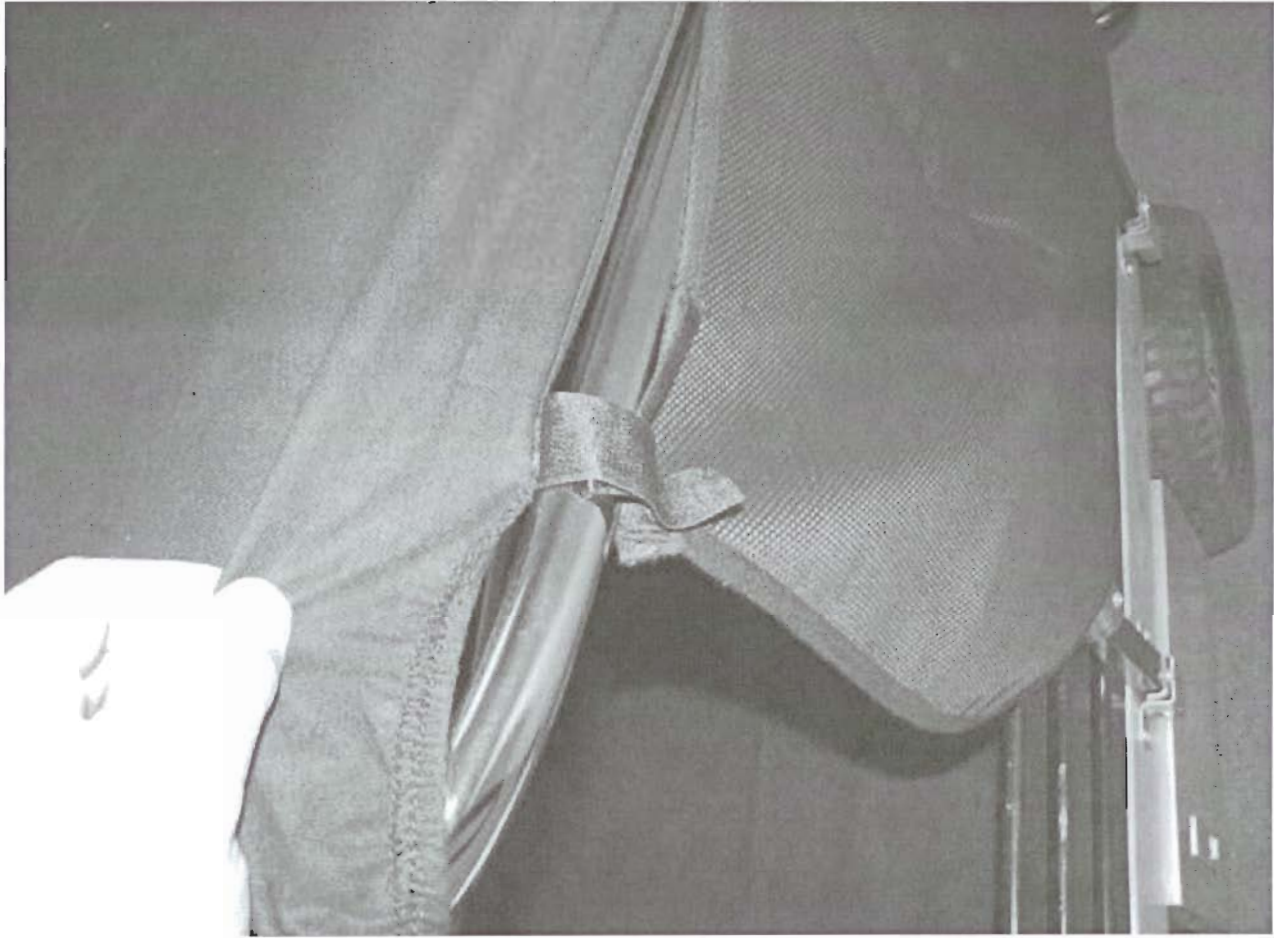
2/20/2007





11. Stretch the fabric top over the frame. Attach the side netting by inserting the Velcro straps from the top fabric through the loops on the netting.







Steve Cook
On the Edge Marketing
Sales
(949) 305-4830 x11
(949) 380-0547 fax
stevec@ontheedgemarketing.com

ŃÄ»çÃã-ŃÓÊĪã-3.5GÈÝÁç£-20M,½¼p